

## GraphicMaster

**GraphicMaster™** is a powerful mathematical function plotter with extensive features.

**GraphicMaster** allows scientists and students to visualize mathematical functions and data.

In contrast to other function plotters, **GraphicMaster** has some outstanding features, for example nested functions.



April 2010

### Contact

[mhgs@MHGSoft.de](mailto:mhgs@MHGSoft.de)  
<http://www.MHGSoft.de>  
<http://www.MHGSoft.de/graphicmaster/>



True IT Solutions for You

### MHGS

Egerlandstr. 18  
 91083 Baiersdorf  
 Germany

[mhgs@MHGSoft.de](mailto:mhgs@MHGSoft.de)  
<http://www.MHGSoft.de>  
<http://www.MHGSoft.de/graphicmaster/>

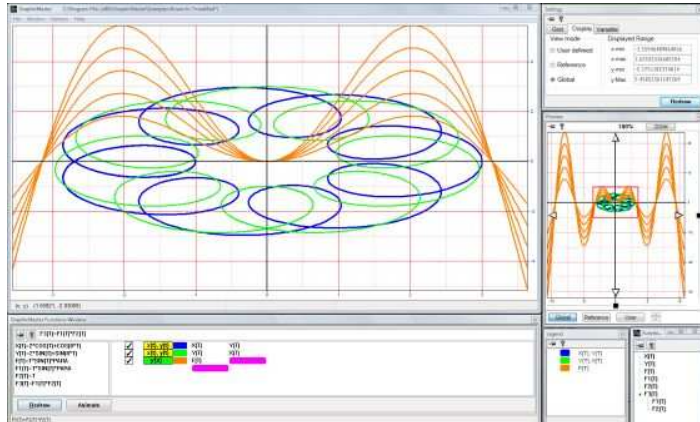
## GraphicMaster



**Powerful Mathematical  
 Function Plotter**

# GraphicMaster

$f(x)$

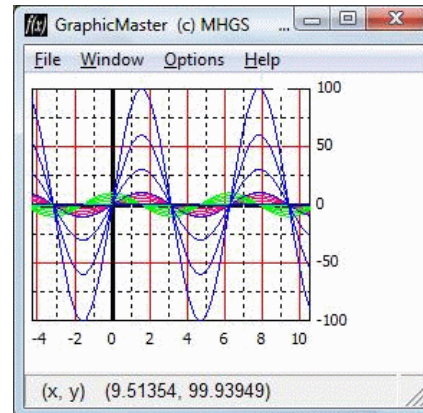


## Main Features

- ◆ **Intuitive Windows Graphical User Interface**  
easy to use, online help at a push of a button.
- ◆ **Mathematical Function Plotter**  
interactive, commandline support.
- ◆ **About 100 Mathematical Functions and Operations**  
based on *TFunctionParser*<sup>™</sup>.
- ◆ **Multiple Function Graphs in one Window**  
makes comparing functions a simple task.
- ◆ **Several Function Types**  
Cartesian, parametric, polar, polar-parametric
- ◆ **User-defined Functions**  
for specifying custom functions.
- ◆ **Nested Functions**  
like  $f(g(h(x)))$ .
- ◆ **Super-positioning**  
like  $f_1(x)=g(x)*\sin(x-3)+h(x)$ .
- ◆ **Parameter Support**  
e. g.  $f_1(x)=A*\sin(x)$  where A is 1, 2, 5, 10.

- ◆ **Animation**  
of functions with parameters.
- ◆ **Coordinate System**  
Cartesian or polar.
- ◆ **Grid**  
linear, logarithmic and decibel scaling in both axes.
- ◆ **Save and Restore**  
of function graphs.
- ◆ **Save as Bitmap**  
for exporting to an independent format.
- ◆ **Print Functionality**  
for output on any printer.
- ◆ **HPGL Plotter Support**  
output on physical plotter or to file.
- ◆ **Zoom, Pan**  
mouse wheel supported.

- ◆ **Customizable Layout**  
optimized for screen resolution.
- ◆ **Preview Window**  
with function overview in larger range.
- ◆ **Curve Selection**  
simplifies formatting of single curves.
- ◆ ..



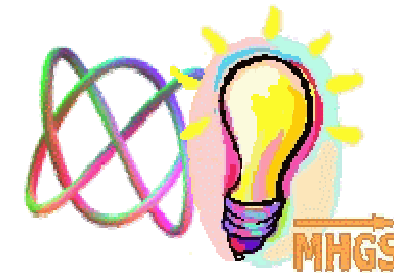
## System Requirements

- ◆ Processor eq. Intel 486/ Pentium I or better.
- ◆ Microsoft Windows 95/98/ME/NT/2000/XP/2003/Vista/2008/7, 32 or 64 bit.
- ◆ Memory 256 MB of RAM (512 MB or more recommended).
- ◆ 8 MB hard disk .
- ◆ VGA or higher resolution monitor.
- ◆ Mouse or other pointing device.
- ◆ No administrator privileges required.

## Costs and Fees

One single-user license for **GraphicMaster** costs 12 EUR (about 17 USD).

Please contact us for discounted classroom licenses or graduated prices for omnibus orders.



**MHGS**

True IT Solutions for You

[mhgs@MHGSoft.de](mailto:mhgs@MHGSoft.de)

<http://www.MHGSoft.de>

<http://www.MHGSoft.de/graphicmaster/>