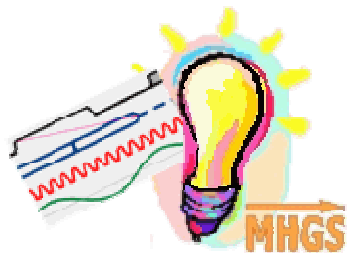


## TimingDraw

**TimingDraw™** is a powerful editor for digital and analog timing diagrams with extensive features.

**TimingDraw** allows designers, scientists, and students to specify and visualize timing diagrams.

In contrast to other timing editors, **TimingDraw** has some outstanding features, for example quick edit functions.



March 2012

### Contact

[mhgs@MHGSoft.de](mailto:mhgs@MHGSoft.de)  
<http://www.MHGSoft.de>  
<http://www.MHGSoft.de/TimingDraw/>



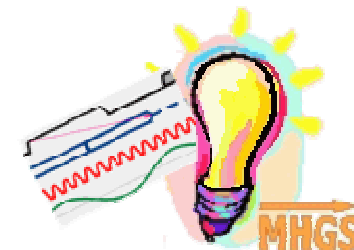
True IT Solutions for You

### MHGS

Egerlandstr. 18  
 91083 Baiersdorf  
 Germany

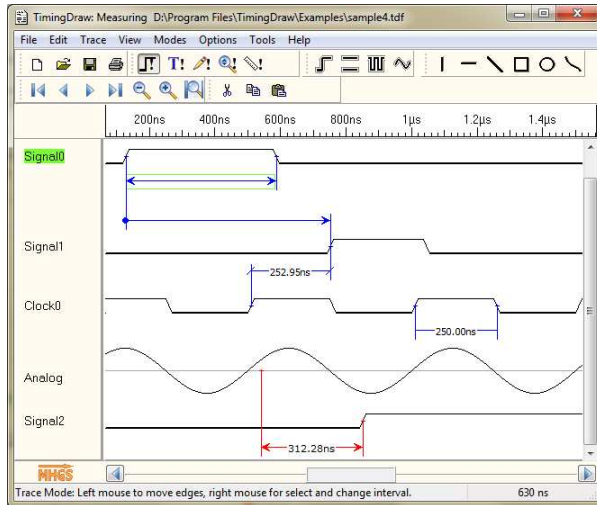
[mhgs@MHGSoft.de](mailto:mhgs@MHGSoft.de)  
<http://www.MHGSoft.de>  
<http://www.MHGSoft.de/TimingDraw/>

## TimingDraw



**Powerful Editor for  
 Digital and Analog  
 Timing Diagrams**

# TimingDraw



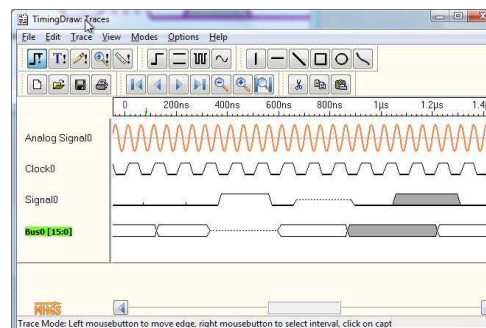
## Features

- ◆ **Intuitive Windows Graphical User Interface** easy to use, online help at a push of a button.
- ◆ **Automation/COM interface** performs tasks per simple script.
- ◆ **Digital and analog signals supported.**
- ◆ Customizable signals.
- ◆ Logical signals, busses, clocks, analog signals (calculated or measured).
- ◆ Easy and interactive zoom/ unzoom by mouse wheel and mouse drag.
- ◆ Save/ load projects.
- ◆ Save as web page.
- ◆ Open remote projects.
- ◆ Undo and Redo.
- ◆ Custom Logo

- ◆ Export/ import of traces.
- ◆ Measuring capabilities.
- ◆ Labels and text supported.
- ◆ Graphics (arrows, boxes, circles, curves).
- ◆ Inversion of signals.
- ◆ Time line.
- ◆ Time jumps
- ◆ Cut, Copy, Paste of traces and intervals.
- ◆ Insert and delete time spans.
- ◆ Edge help lines.
- ◆ Uncertainties.
- ◆ Save as Bitmap or Vector Graphic.
- ◆ Copy to clipboard.
- ◆ Print Functionality for output on any printer.

- ◆ Send timing diagrams via eMail.
- ◆ Trace Navigator.
- ◆ Reference Navigator.
- ◆ Magnifier.

A free viewer for **TimingDraw** projects is available!



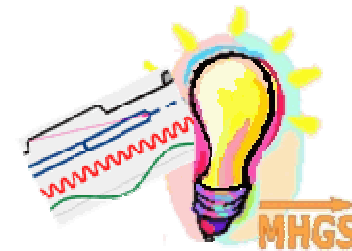
## System Requirements

- ◆ Microsoft Windows 95/98/ME/NT/2000/XP/2003/Vista/2008/7, 32 or 64 bit.
- ◆ Memory 256 MB of RAM (512 MB or more recommended).
- ◆ 12 MB hard disk space.
- ◆ VGA or higher resolution monitor.
- ◆ Mouse or other pointing device.
- ◆ No administrator privileges required.

## Costs and Fees

One single-user license for **TimingDraw** costs 34.95 EUR (about 47 USD).

Please contact us for discounted company licenses or graduated prices for omnibus orders.



**MHGS** True IT Solutions for You

[mhgs@MHGSoft.de](mailto:mhgs@MHGSoft.de)  
<http://www.MHGSoft.de>  
<http://www.MHGSoft.de/TimingDraw/>